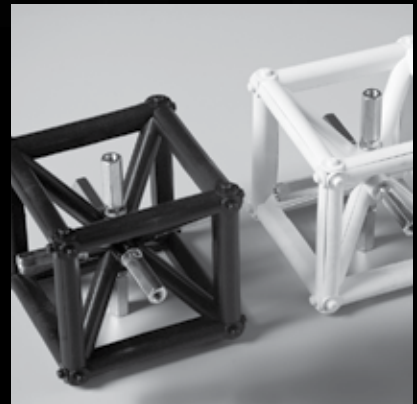


Modular display solutions



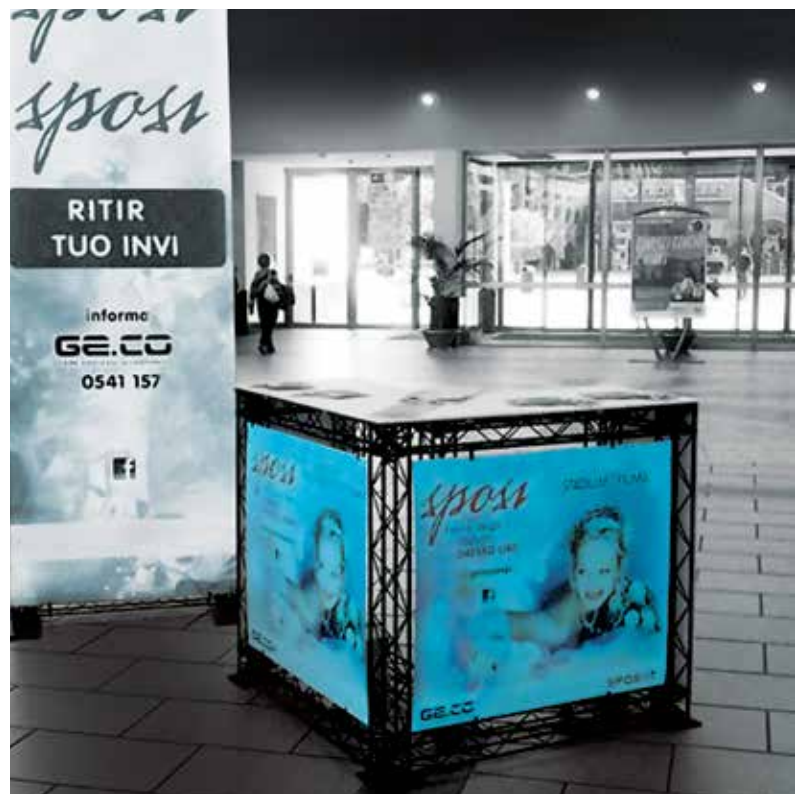
X-10 CROSSwire®

X-MODULE



X-10 CROSSwire®

Danish design. Made in Denmark. Patent no. 001066500



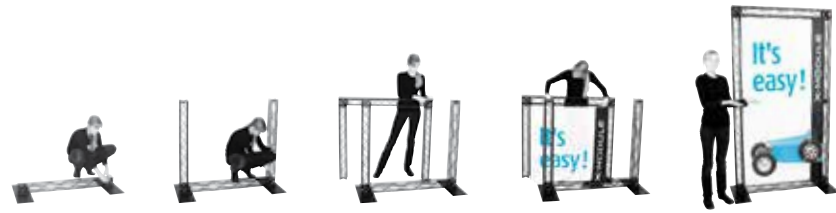
Key benefits

- Exhibitions
- Retail
- Events
- Museums
- Shop fitting
- P.O.S
- Set building

X-10 CROSSwire. Creativity has no limit!

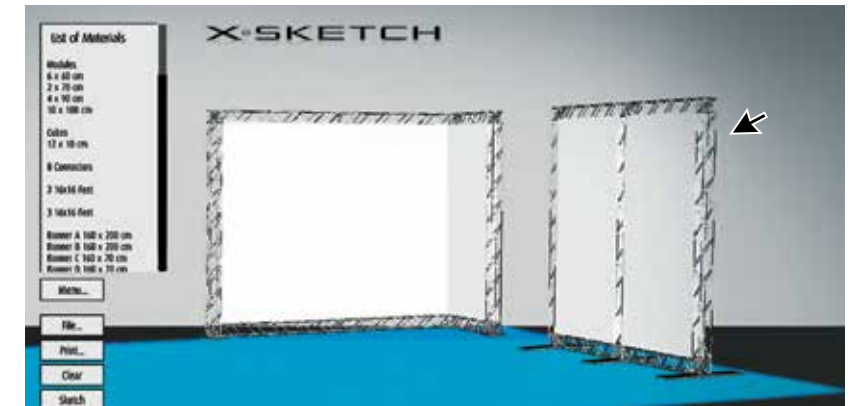
With a 10cm x 10cm profile, CROSSwire is ideal for dressing shell schemes as well as for standalone exhibition stands. The system works equally well when being used for display towers, display units or to frame any type of product. CROSSwire is extremely lightweight, making it one of the most portable exhibition system in the world.

CROSSwire is also extremely robust and can be reused time and time again in different configurations. CROSSwire is very easy to assemble. Secured by hand tightened thumb screws, no tools are required.





X®SKETCH



... Less than a few minutes with X-SKETCH!

Available on www.x-module.com and you have software that provides a simple way to design a stand in less than 2 minutes. Draw your stand by pulling the walls up from the floor. Move them, add accessories, import images - all with a few clicks with your mouse!

- It's as easy as can be...



X-10 CROSSwire®

Element list

Patent n°001066500



Part no. 3016
Module 10 cm
Weight: 0,220 kg
Material: Composite, aluminium & steel



Part no. 3017
Module 20 cm
Weight: 0,290 kg
Material: Composite, aluminium & steel



Part no. 3018
Module 30 cm
Weight: 0,360 kg
Material: Composite, aluminium & steel



Part no. 3019
Module 40 cm
Weight: 0,430 kg
Material: Composite, aluminium & steel



Part no. 3020
Module 50 cm
Weight: 0,500 kg
Material: Composite, aluminium & steel



Part no. 3021
Module 60 cm
Weight: 0,570 kg
Material: Composite, aluminium & steel



Part no. 3022
Module 70 cm
Weight: 0,640 kg
Material: Composite, aluminium & steel



Part no. 3023
Module 80 cm
Weight: 0,710 kg
Material: Composite, aluminium & steel



Part no. 3024
Module 90 cm
Weight: 0,780 kg
Material: Composite, aluminium & steel



Part no. 3025
Module 100 cm
Weight: 0,850 kg
Material: Composite, aluminium & steel



Part no. 3026
Module 110 cm
Weight: 0,920 kg
Material: Composite, aluminium & steel



Part no. 3027
Module 120 cm
Weight: 0,990 kg
Material: Composite, aluminium & steel



Part no. 3062
Module 130 cm
Weight: 1,060 kg
Material: Composite, aluminium & steel



Part no. 3072
Module 140 cm
Weight: 1,130 kg
Material: Composite, aluminium & steel



Part no. 3028
Module 150 cm
Weight: 1,200 kg
Material: Composite, aluminium & steel



Part no. 3029
Module 180 cm
Weight: 1,410 kg
Material: Composite, aluminium & steel



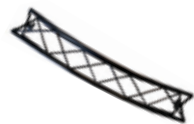
Part no. 3030
Module 200 cm
Weight: 1,550 kg
Material: Composite, aluminium & steel



Part no. 3077
Curve Module, 40 cm
Weight: 0,430 kg
Material: Composite, aluminium & steel



Part no. 3075
Curve Module, 60 cm
Weight: 0,570 kg
Material: Composite, aluminium & steel



Part no. 3094
Curve Module, 60 cm, R 150
Weight: 0,600 kg
Material: Composite, aluminium & steel



Part no. 3031
Connector
Weight: 0,030 kg
Material: Composite & steel



Part no. 3032
Cube
Weight: 0,390 kg
Material: Composite & steel



Part no. 3068
Cube 45 deg
Weight: 0,100 kg
Material: Composite & steel



Part no. 3069
Hinge 30-230 deg
Weight: 0,100 kg
Material: Composite & steel



Part no. 3056
Foot 12 x 12 cm
Weight: 0,140 kg
Material: PEHD



Part no. 3057
Foot 30 x 30 cm
Weight: 0,850 kg
Material: PEHD



Part no. 3064
Foot 40 x 40 cm
Weight: 8,000 kg
Material: Metal reinforced PEHD



Part no. 3066
Foot 16 x 16 cm
Weight: 0,160 kg
Material: Composite



Part no. 3067
Foot 16 x 60 cm
Weight: 0,500 kg
Material: Composite



Part no. 3071
Foot 16 x 38 cm
Weight: 350 g
Material: Composite



Part no. 3036
L-table 30 x 30 cm
Weight: 1,030 kg
Material: PEHD & steel



Part no. 3083
Shelf 20 x 60 cm
Weight: 700 g
Material: Aluminium



Part no. 3084
Shelf 20 x 80 cm
Weight: 900 g
Material: Aluminium



Part no. 3085
Shelf 20 x 100 cm
Weight: 1100 g
Material: Aluminium



Part no. 3086
Shelf 20 x 120 cm
Weight: 1300 g
Material: Aluminium



Part no. 3087
Table top, 40 x 120 cm
Weight: 2400 g
Material: Aluminium



Part no. 3074
Steel bracket
Weight: 0,300 kg
Material: Steel



Part no. 3095
iPad holder
Weight: 0,200 kg
Material: Alu



Part no. 3037
Brochure holder - M65
Weight: 0,140 kg
Material: PS & POM



Part no. 3038
Brochure holder - A5
Weight: 0,160 kg
Material: PS & POM



Part no. 3039
Brochure holder - A4
Weight: 0,330 kg
Material: PS & POM



Part no. 3090
Brochure holder - A4
Weight: 0,450 kg
Material: Aluminium



Part no. 3040
Lamp, standard - 150W
Weight: 0,660 kg
Material: Varius



Part no. 3041
Clip, top - 2 version, for alu list
Weight: 0,005 kg
Material: POM



Part no. 3042
Clip, bottom - 2 version, for alu list
Weight: 0,005 kg
Material: POM & elastic



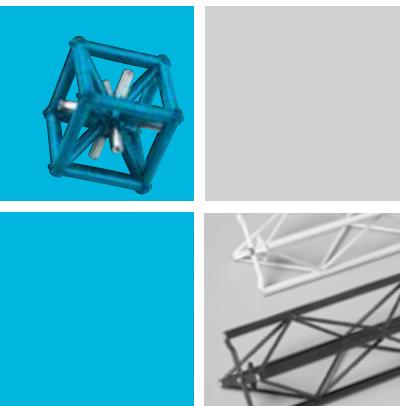
Part no. 3043
Clip, top - for Ø 4 mm steel
Weight: 0,005 kg
Material: POM



Part no. 3044
Clip, bottom - for Ø 4 mm steel
Weight: 0,005 kg
Material: POM & elastic



Part no. 3082
Clip, full face
Weight: 0,010 kg
Material: POM



X-10 CROSSwire®

by

X-MODULE